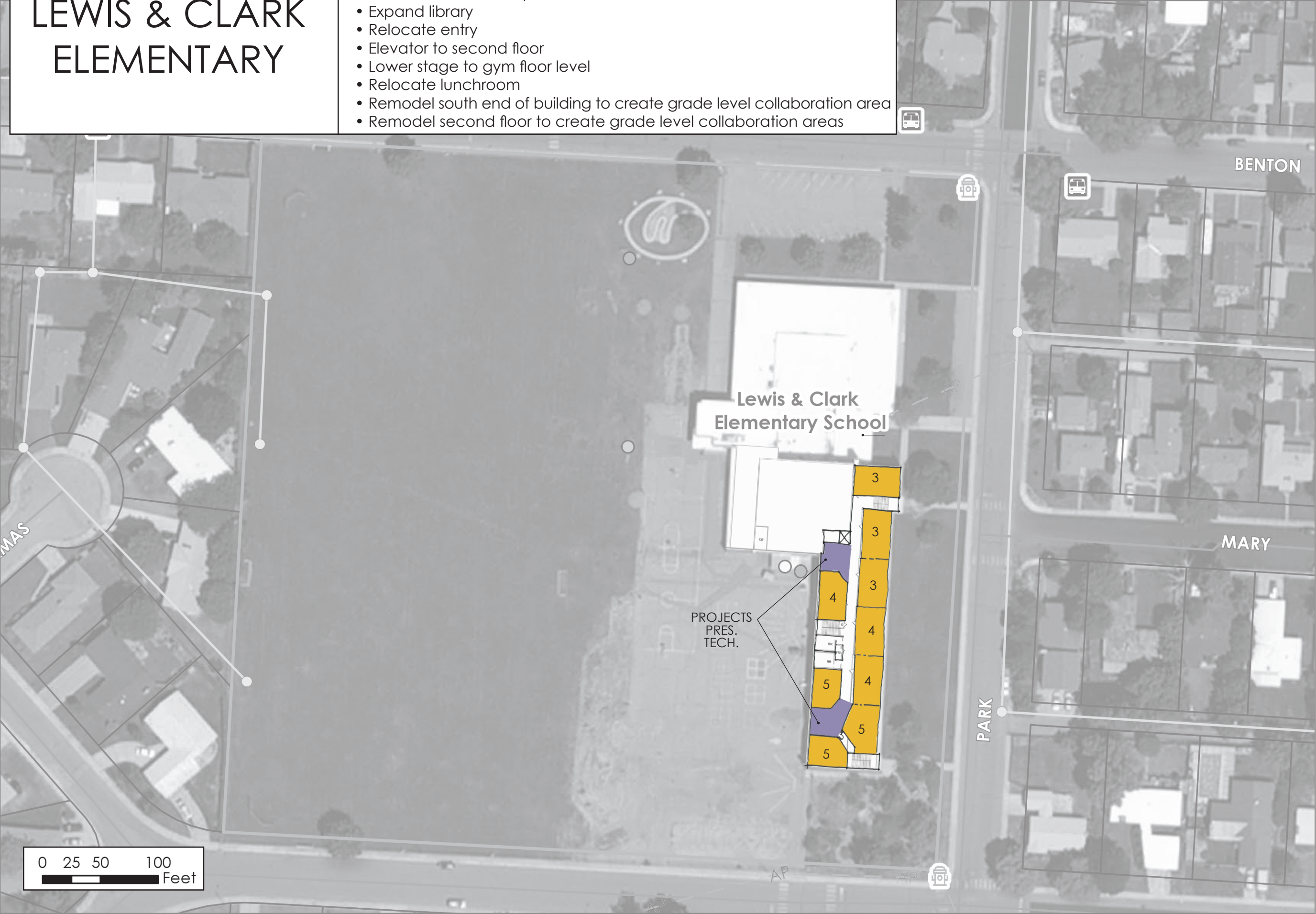


# LEWIS & CLARK ELEMENTARY

- Option E.2 - Expand**
- Transform north classrooms to create break out areas
  - Barn doors between pairs of classrooms
  - Expand library
  - Relocate entry
  - Elevator to second floor
  - Lower stage to gym floor level
  - Relocate lunchroom
  - Remodel south end of building to create grade level collaboration area
  - Remodel second floor to create grade level collaboration areas



Missoula County  
Public Schools  
Facilities Strategic Plan  
Lewis & Clark  
Elementary School  
Site Area: 8.59 acres  
Parking Spaces: 20

**Building Square Footage**  
Existing 60,413  
New 2,250

**Total Project Cost**  
\$7,793,075

**Replacement Cost**  
\$12,958,170

**Ratio** 60%  
Good  
Fair  
Poor  
**Replace**

**Remaining Deferred  
Maintenance & Energy  
Project Costs**  
\$0

**Current Annual Energy Costs**  
\$50,000

**Potential Energy Savings**  
\$6,000

**Rental/Lease/Sale Income**  
None

**Current Enrollment** 481  
**Future Peak Enrollment** 500

**Capacity** 450-500  
**Accessible Capacity** 450-500

**Accessible/Permanent  
Capacity** 450-500  
Costs include construction, demolition (where applicable),  
technology, furnishings, site development, design fees,  
site acquisition (where applicable), contingency and  
escalation to January 2020



